



# **LEDOK Lite APP**

---

## **Manual**

Version: V3.0

## Statement

Dear user friend , thanks for choosing Shanghai Xixun Electronic Technology Co. , Ltd. (hereinafter referred to as Xixun Technology) as your LED advertising equipment control system. The main purpose of this document is to help you quickly understand and use the product. We strive to be precise and reliable when writing the document , and the content may be modified or changed at any time without notice.

## Copyright

The copyright of this document belongs to Xixun Technology. Without the written permission of our company , no unit or individual may copy or extract the content of this article in any form.

## Trademark



is a registered trademark of Xixun Technology.

# Updated records

---

No.	Version	Updates	Revised date
1	Ver.1.0	Initial release	2022.03.22
2	Ver.2.0	Updated content	2023.05.22
3	Ver3.0	Updated content	2023.08.09

Note: The content of the document is subject to change without notice.

SHENZHEN SYSOLUTION TECHNOLOGY CO., LTD

# Catalogs

Software Introduction .....	1
Software installation .....	2
Installing software .....	2
APP Basic Instructions .....	3
Local Connection Instructions .....	6
Detecting the control card IP address .....	6
1.Screen Management .....	9
2.Solution List .....	10
2.1 Add Task .....	11
2.2 Timed Sending Function .....	14
3.Expand .....	15

SHENZHEN SYSOLUTION TECHNOLOGY CO., LTD

SHENZHEN SYSOLUTION TECHNOLOGY CO., LTD

# Software Introduction

---

LEDOK Lite Mobile App is a professional program editing software released by Sysolution Technology after a long period of market research and analysis of user behavior and habits. It is an simple but functionable APP fits for various Android OS, also features same functions of LEDOK Express.

SHENZHEN SYSOLUTION TECHNOLOGY CO., LTD

# Software installation

## Installing software

Software download address: [www.sysolution.net](http://www.sysolution.net)

Note: Click on this URL to enter the English official website, find "Download & News" - "Software Download", you can see the official QR code of the mobile application. Customers can download the software by scanning the official QR code with their own mobile browsers.

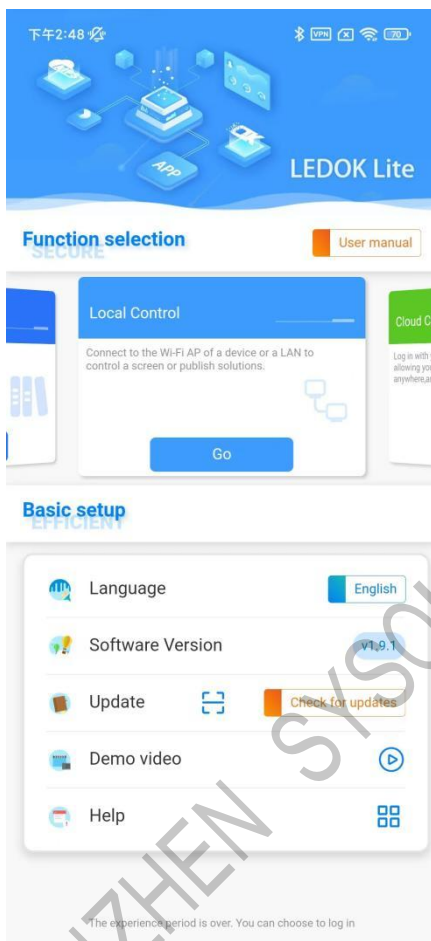


# APP Basic Instructions

Open LEDOK Lite, we will see the following page:

Function Selection:

Local Control" button, Cloud Management Screen, Sysolution website, Vehicle HUB (Vehhub platform), AIPS platform, and Database. The basic settings include the following items, please refer to the following pictures:



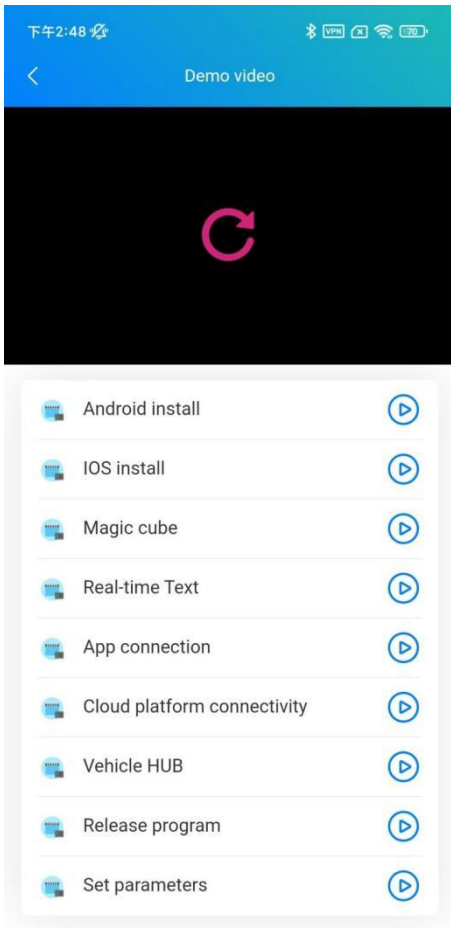
Language: Languages can be switched

Software version: 1.9.1 (will be updated in the future)

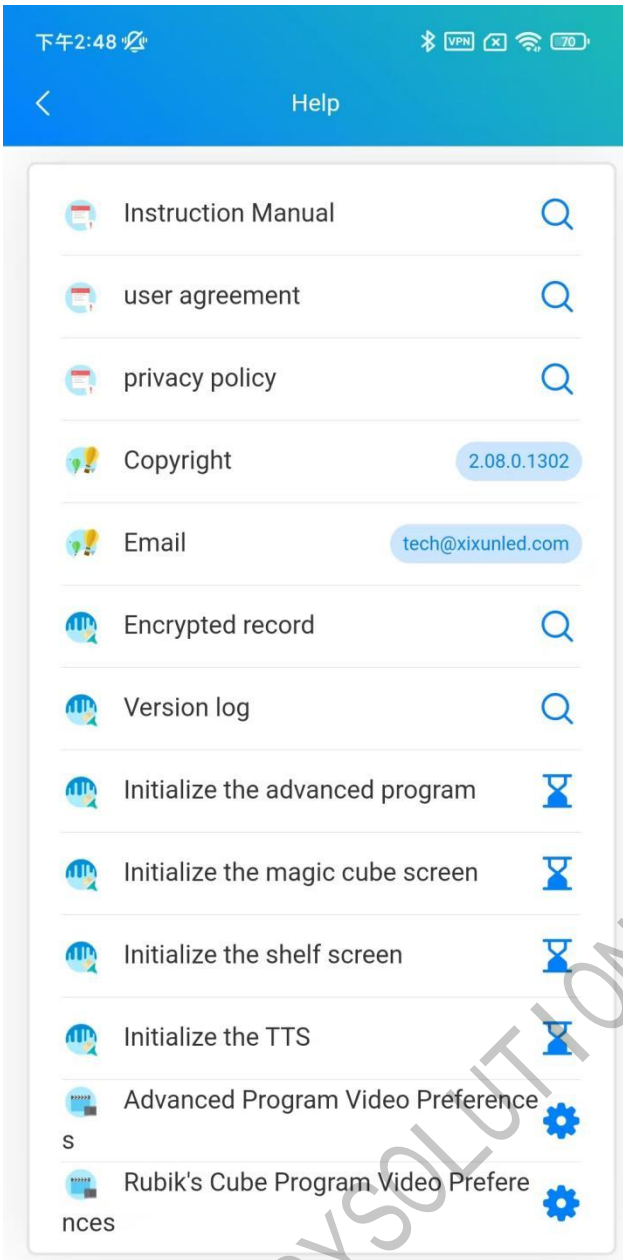
Update: Click this “Check for Updates” to install the latest version Demo video:

Video demonstration of the program operation.





Help: For functions such as instruction manual, user agreement, privacy policy, and software settings, please refer to the following picture:



SHENZHEN SYSOLUTION TECHNOLOGY CO., LTD

# Local Connection Instructions

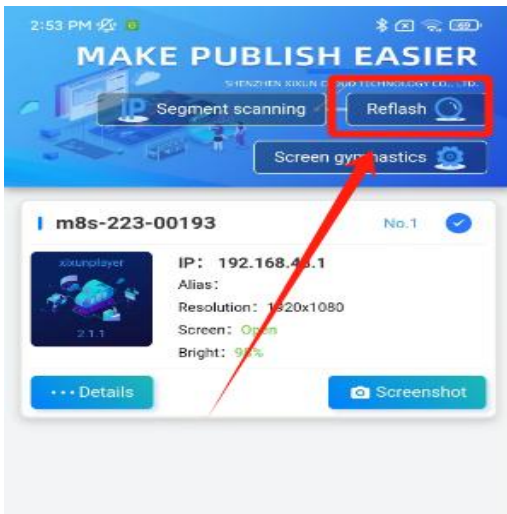
---

## Detecting the control card IP address

Preparation: Turn on power for led control card, enter the WLAN of the cell phone, find the hotspot of the control card and connect it, the initial password is 12345678.

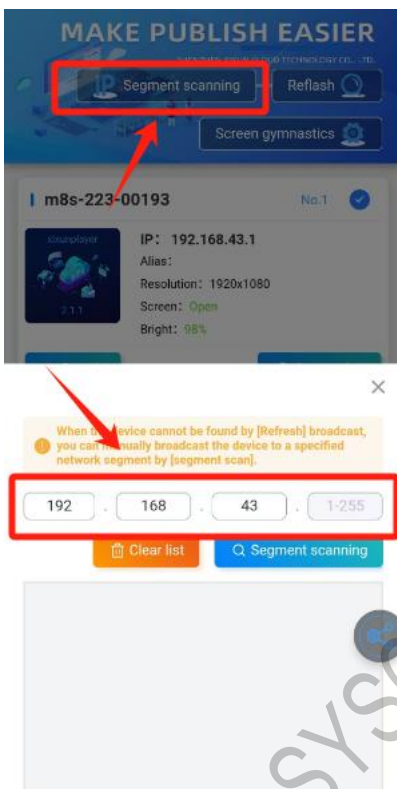


Clicking the Search button in the upper right corner will detect the control card IP, as shown in the picture



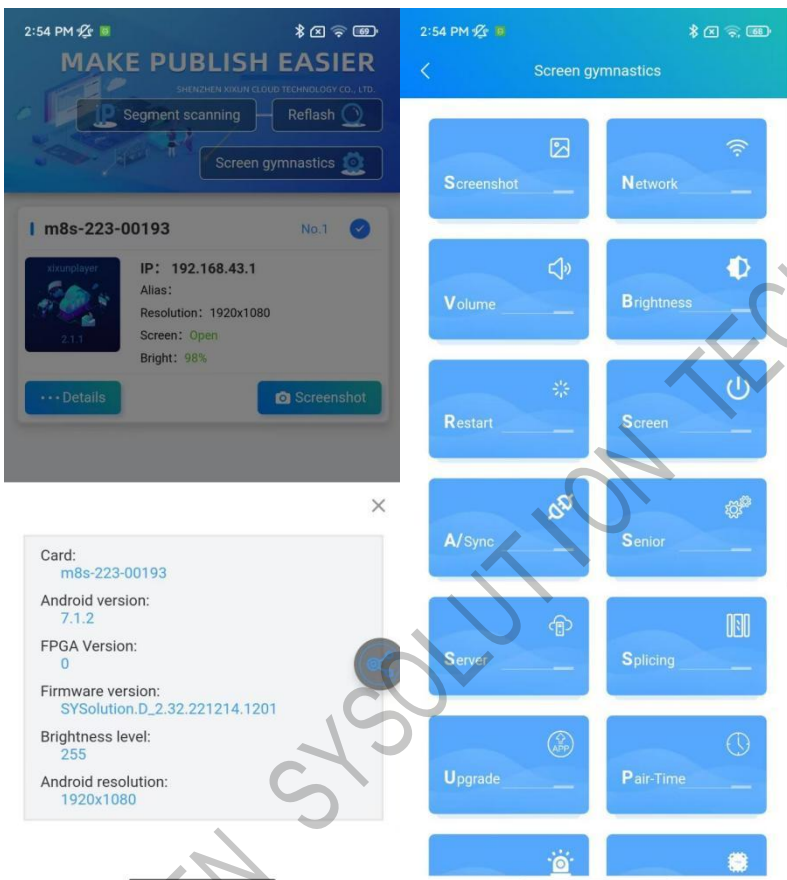
SHENZHEN SYSOLUTION TECHNOLOGY CO., LTD.

If you can't find the IP address of the control card, click the IP Search button on the upper left corner, enter IP 192.168.43, and then click "Segmented Scanning", wait for a while and then find an IP address, then click Close and click the Search button again, you will see the IP address of the control card, as shown in the picture:



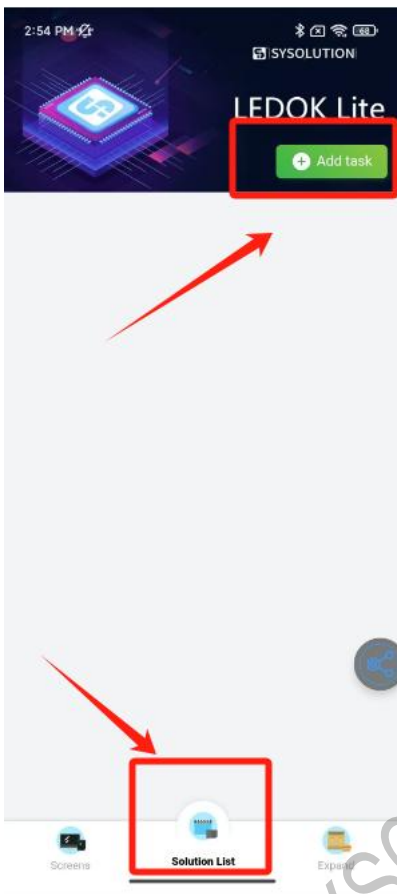
# 1.Screen Management

On the screen management page, you can view the card number, IP, alias, resolution and brightness of the screen status, etc. Click Details to view more information about the built-in version. Click on the screen gymnastics that is set to adjust the status of the screen, the version of the update, uninstall, etc., can be as shown in the picture:



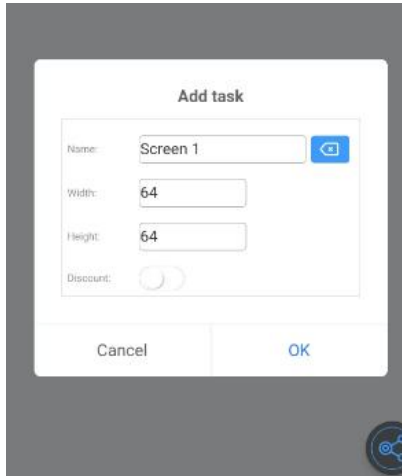
## 2.Solution List

The solution list at the bottom of the page is used to create programs and publish them. Click Solution List, this page has Add task, Delete, Edit and Send buttons as shown in the picture:

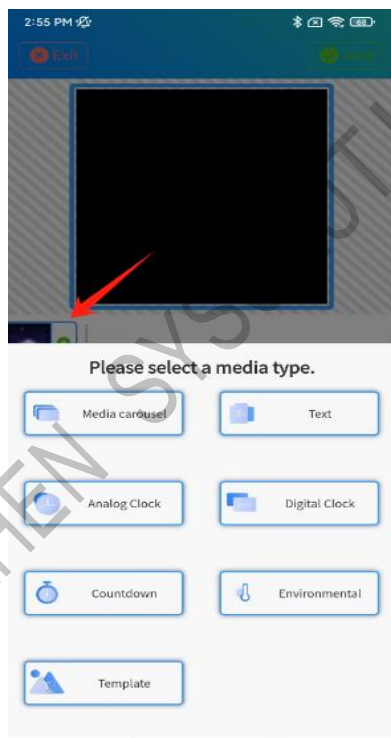


## 2.1 Add Task

- 1、 Click the “Add task” button, set the task name and program width and height, and then click OK.

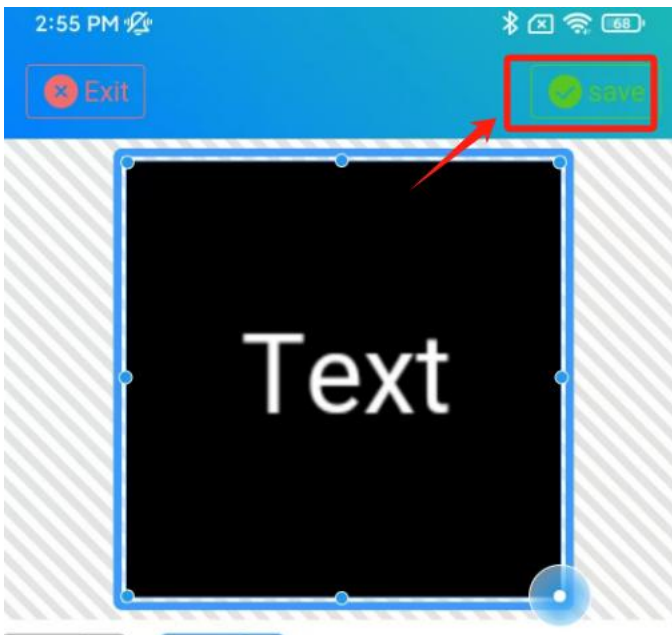


- 2、 Click the Add button on the left to select the type of media to create the program, as shown in the picture:

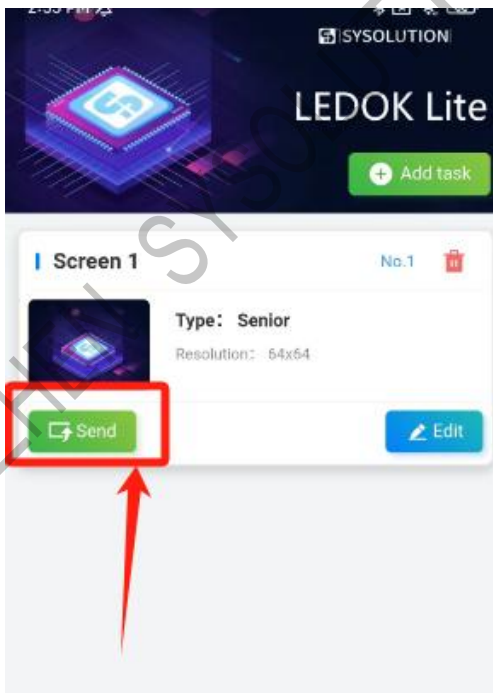




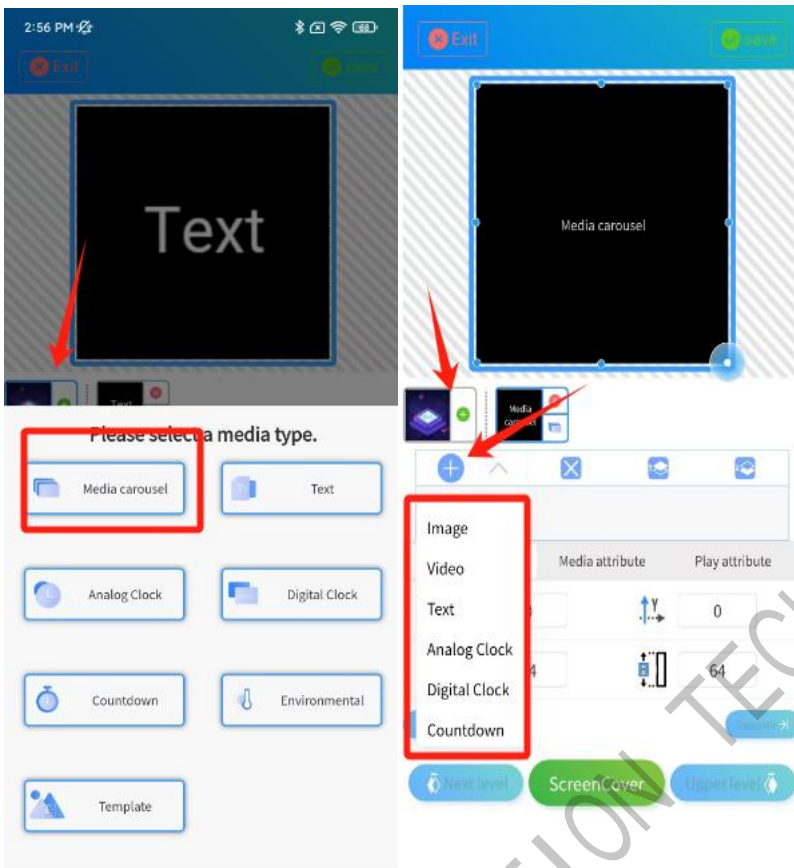
3. Then click on the Save button in the upper right corner, a prompt will pop up, click OK.



4. Then click the Send button, select the control card and click "OK" , and wait for sending.

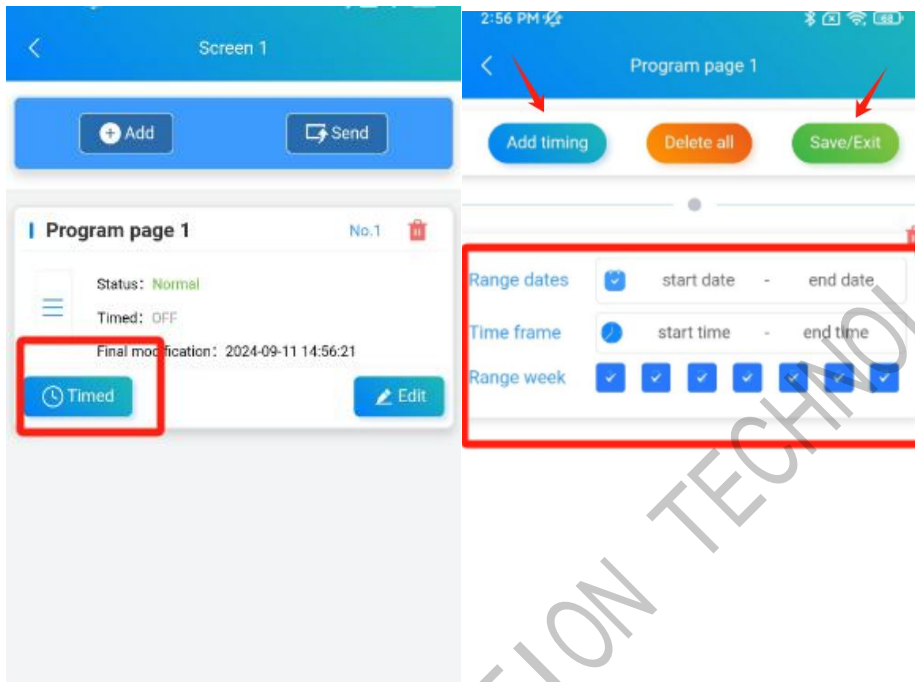


5、 If you want to send images and videos at once, you can do so by making a rotating clip window, as shown in the picture:



## 2.2 Timed Sending Function

1、 Click the Timed button to enter the Timing page, click Add Timing to set the date range, time range and week range for the program to play, then click Save to exit and send it.



2、 If you want to cancel the timer, go to the timer screen to delete the settings and click "Delete all" , then send the program again.

### 3.Expand

Expanded Real-time text, Scoreboard, Magic Cube screen, Shelf screen, TTS and other now mainstream features, new features to increase convenience.

